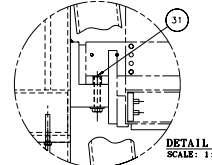


REV	DESCRIPTION	DRAWN	DATE

- NOTES:
- VERTICALLY ALIGN CHAMBER #1 TO THE CENTER LINE OF THE BEAM BY USING THE LEVELING MOUNT NUTS ON THE CKOV UNIT. USE SHIM PLATE AS NECESSARY. AFTER THE ADJUSTMENT TORQUE THE BOLTS TO 200 LBS./FT.
  - WEIGHTS:
    - CHAMBER #1 = 780 LBS.
    - CHAMBER #2 = 460 LBS.
    - CKOV UNIT = 3230 LBS.
    - SUPPORT CARTS WEIGHTS = 5000 LBS.
  - FIELD DRILL HOLES FOR ITEMS 21 & 31. THE LOCATION OF THE HOLES IN THE EXISTING FOOT BRACKETS OF CHAMBER #2 SHALL MATCH THE HOLES IN THE UPPER & LOWER BRACKET OF THE INNER FRAME WHILE THE EXISTING CHAMBER #2 ALIGNS TO THE CENTERLINE OF THE BEAM VERTICALLY. AFTER CHAMBER #2 IS INSTALLED TORQUE ITEM 21 TO 110 FT./LBS. AND ITEM 22 TO 25 FT./LBS.
  - TORQUE THE FOLLOWING ITEMS:
    - ITEM 11 TO 150 FT./LBS.
    - ITEM 14 TO 22 FT./LBS.
    - ITEM 20 TO 200 FT./LBS.
    - ITEM 29 TO 110 FT./LBS.



33	COML	LOCK WASHER - 5/16 SCREW SIZE	2
32	COML	LOCK WASHER - 1/2 SCREW SIZE	2
31	FERNI #	303 S 5/16-18 INTERNAL SELF LOCKING THREADED INSERT-KEENERT #MWS18	2
30	COML	LOCK WASHER - 3/4 SCREW SIZE	12
29	COML	1/2-13 UNC-2A X 2" LG. HEX.HD.CAP SCREW-ALLOY STEEL	12
28	MD-421023	CERENKOV HOLDING ANGLE L.H.	1
27	COML	FLAT WASHER - 3/4 SCREW SIZE	8
26	COML	HD FLUSH MOUNT INTERNAL THREAD ANCHOR HD-1/2 HILL #00045754	4
25	AS BUILT	CHAMBER 2	1
24	AS BUILT	CHAMBER 1	1
23	MC-421022	SHIM	AS REQ'D
22	COML	5/16-18 UNC-2A X 1 1/2" LG. HEX.HD. SCREW - 18-8 SST.	2
21	COML	1/2-13 UNC-2A X 2 1/2" LG. HEX.HD. SCREW - 18-8 SST.	2
20	COML	3/4-10 UNC-2A X 2" LG. HEX.HD. SCREW - 18-8 SST.	4
19	COML	LOCK WASHER - 3/4 SCREW SIZE	4
18	COML	HEAVY HEX. NUT - 3/4-10 UNC-2B HIGH STRENGTH ALLOY STEEL	4
17	COML	3/4-10 UNC-2A X 1 1/2 LG.HEX.HD. SCREW-GRADE 8 ALLOY STEEL	4
16	COML	3/8-16 UNC-2A X 1 1/2" LG. HEX.HD.CAP SCREW - 18-8 SST.	32
15	COML	FLAT WASHER - 1/2 SCREW SIZE	40
14	COML	1/2-13 UNC-2A X 2" LG. HEX.HD.CAP SCREW - 18-8 SST.	36
13	COML	HIGH STRENGTH HEAVY HEX.NUT,GRADE 2H-18H ALLOY STEEL 18-8 SST	16
12	COML	FLAT WASHERS, LESS HIGH STRENGTH FOR 5/8" SCREW	32
11	COML	GRADE 8 HEX HEAD CAP SCREW 5/8-11 X 4.00" LG. ZINC-PLATED ALLOY STEEL	16
10	SUPPLIED BY FERNI	125 SERIES MODEL 125-CIR-0840-R 1MM CASTER,FLAT FORGED STEEL	2
9	SUPPLIED BY FERNI	125 SERIES MODEL 125-VFR-0840-R 1MM CASTER,V-GROOVE FORGED STEEL	2
8	MB-421017	CASTER SHIM	2
7	MD-421021	SUPPORT CART LOCKING ANGLE	2
6	MD-421020	CERENKOV HOLDING ANGLE	1
5	MD-421019	RAIL-FLAT	1
4	MD-421018	RAIL-V GROOVE	1
3	MD-421008	CERENKOV CART WELDMENT	1
2	MD-397786	INNER & OUTER FRAME ASSEMBLY	1
1	AS BUILT	CERENKOV	1

PARTS LIST			
ITEM	PART NO.	DESCRIPTION OR SIZE	QTY.
UNLESS OTHERWISE SPECIFIED ORIGINATOR I.F.A.N.G. 24-MAY-2002			
XX	XX	ANGLES DRAWN	G.SMITH 24-MAY-2002
2	2	CHECKED	
2	2	APPROVED	
DO NOT SCALE DIMENSIONS			
DIMENSIONS ARE TO CENTER UNLESS OTHERWISE SPECIFIED			
ALL DIMENSIONS ARE IN INCHES			
MATERIAL SEE PARTS LIST ABOVE			
12/			
<b>FERNI NATIONAL ACCELERATOR LABORATORY</b> UNITED STATES DEPARTMENT OF ENERGY PPD/MECHANICAL DEPARTMENT E907 CKOV/CHAMBER #2 STAND SUPPORT CART & RAIL ASSEMBLY			
SCALE	DRAWING NUMBER	SHEET	REV
1:8	3907.500-ME-421016	1 OF 1	
CREATED WITH:	GROUP:	PPD/MECHANICAL DEPARTMENT	