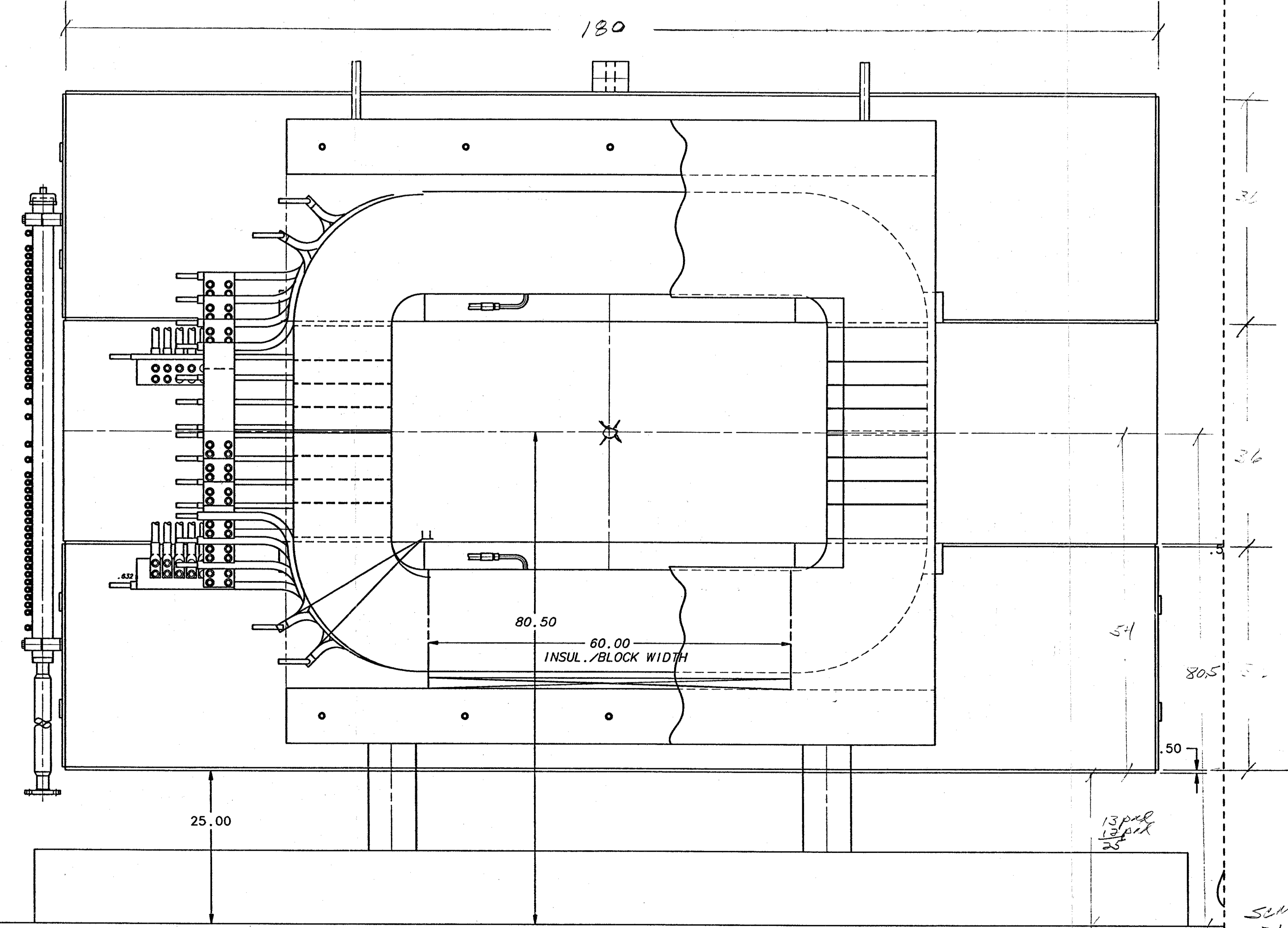
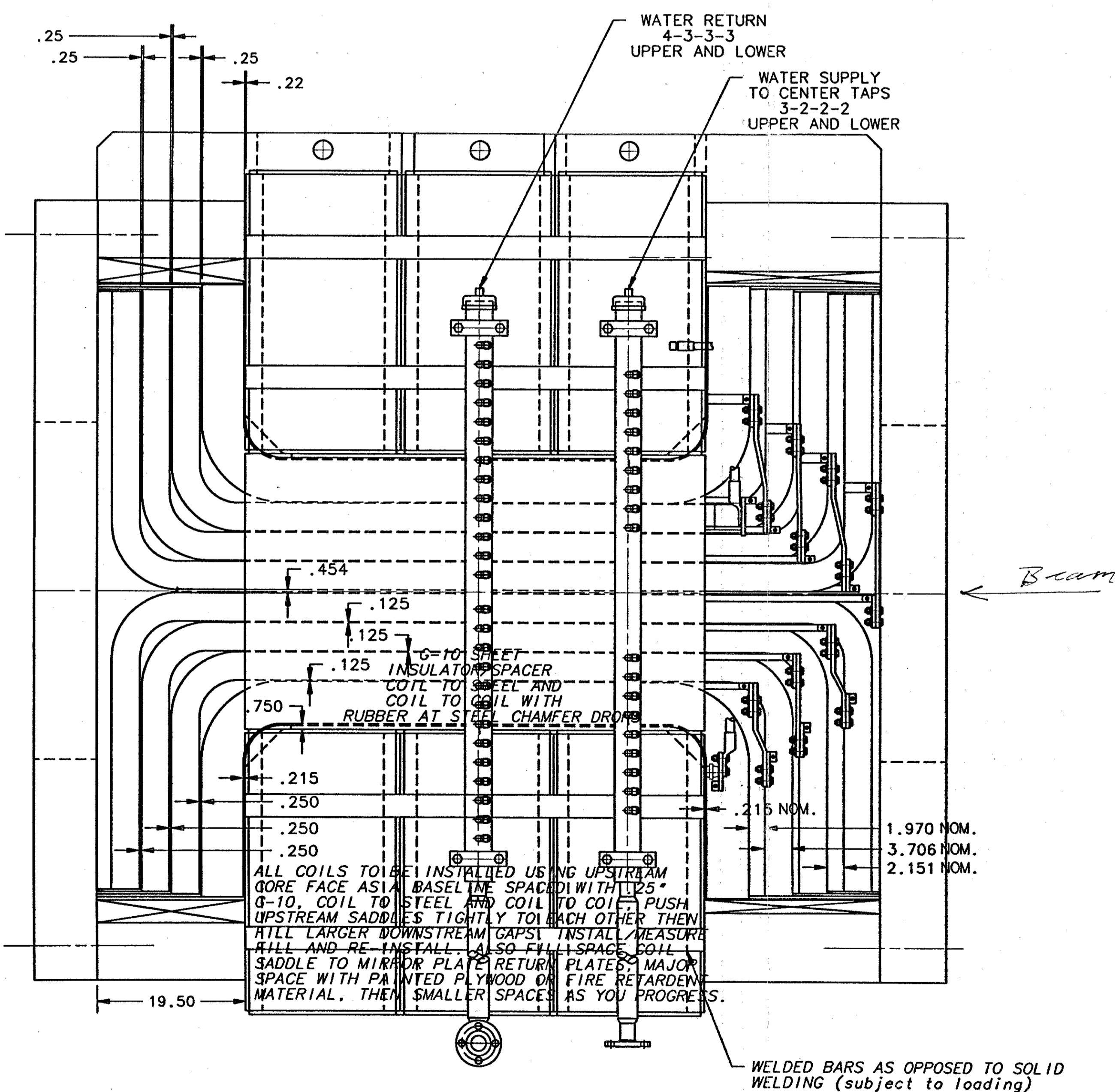
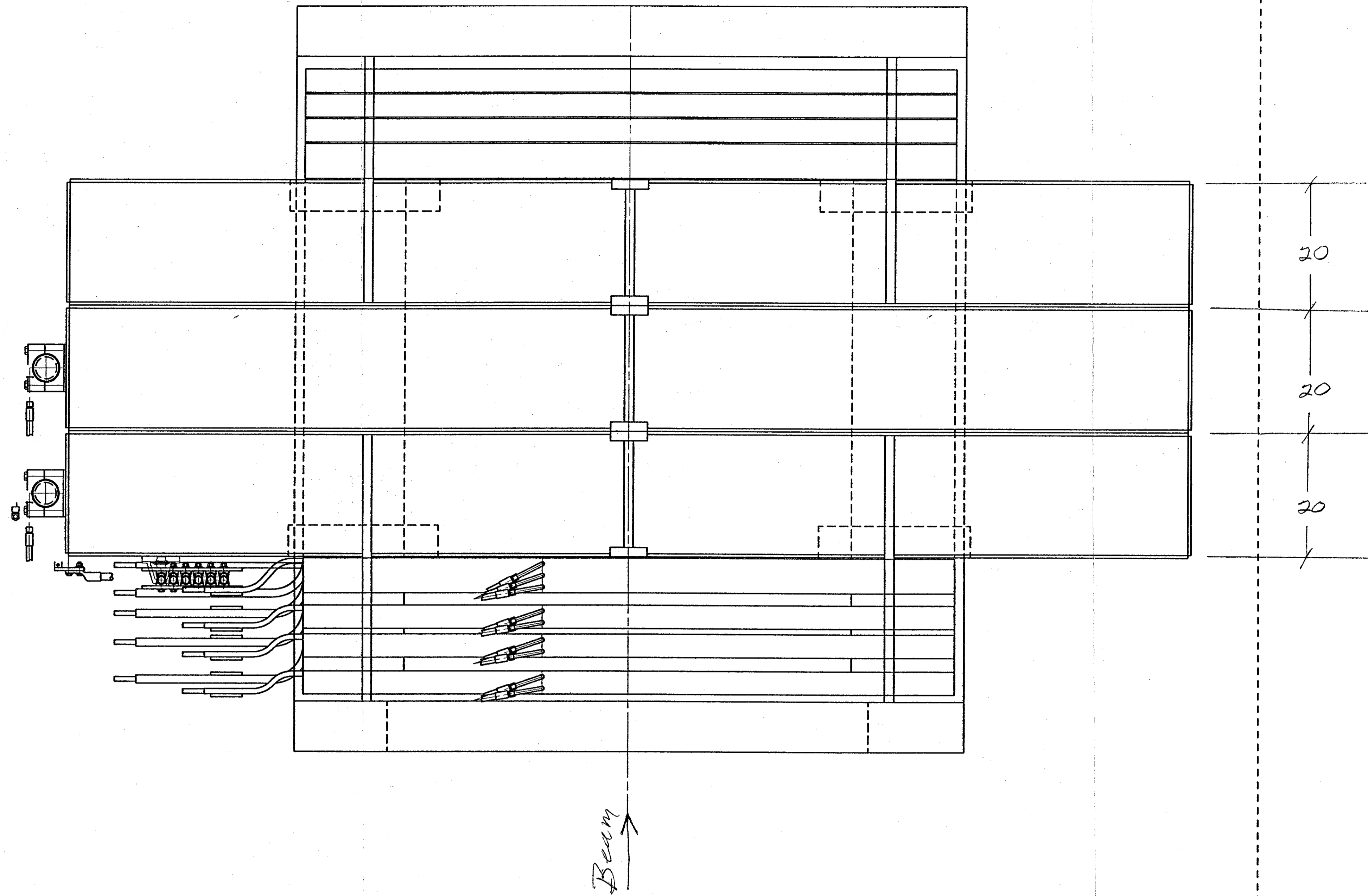


REV.	DESCRIPTION	DRAWN APPROVED	DATE



ITEM NO.	PART NO.	DESCRIPTION OR SIZE	QTY.	REV.
27				
26				
25				
24	COML	LOCK WASHER-1/2 SCREW SIZE SST.		
23	COML	FLAT WASHER-1/2 SCREW SIZE SST.		
22	COML	HEX NUT 1/2-13 UNC-2A-SST.		
21	COML	HEX HD CAP SCREW - SST. 1/2-13 UNC-2A X 2.00" LG.		
20	MD-98048	COOLING SYSTEM ASSEMBLY	1	
19	MD-98049	CLAMPING ASSEMBLY	1	
18	MD-98050	WATER SUPPLY MANIFOLD	1	
17	MD-98049	WATER RETURN MANIFOLD	1	
16	MC-98211	TOP MIDDLE COIL BUS BAR	1	
15	MC-98214	TOP COIL BUS BAR	2	
14	MC-98053	CROSS-OVER COIL BUS BAR	1	
13	MC-98051	BOTTOM COIL BUS BAR	2	
12	MC-98057	BOTTOM MIDDLE BUS BAR	1	
11	ME-98207	TOP-INNER MOST COIL	1	
10	ME-98206	TOP "B" OUTER COIL	1	
9	ME-98206	TOP "C" OUTER COIL	1	
8	ME-98206	TOP "D" OUTER COIL	1	
7	ME-98059	BOTTOM "D" OUTER COIL	1	
6	ME-98059	BOTTOM "C" OUTER COIL	1	
5	ME-98059	BOTTOM "B" OUTER COIL	1	
4	ME-98205	BOTTOM-INNER MOST COIL	1	
3	MD98966	2"x 14GA. TOP CORE MODULES	3	
2	MD-98056	SIDE CORE	2	
1	MD98966	2"x 14GA. BOT. CORE MODULES	3	

PARTS LIST			
UNLESS OTHERWISE SPECIFIED	ORIGINATOR	G SMITH 7/17/01	
.XX	ANGLES		
±			
1. BREAK ALL SHARP EDGES TO 0.015 MAX.	CHECKED		
2. DO NOT SCALE DIMS.	APPROVED		
3. DIMENSIONING IN ACCORD WITH ANSI Y14.5M-1992	USED ON		
4. ALL DIMENSIONS ARE IN INCHES.	MATERIAL		
✓ MAX. ALL MACHINED SURFACES			

FERMI NATIONAL ACCELERATOR LABORATORY
 UNITED STATES DEPARTMENT OF ENERGY
 PPD/MECHANICAL DEPARTMENT
 E907 M-CENTER BEAMLINER
 ROSIE MAGNET (REDRAWN)

SCALE: 1:32
 DRAWING NUMBER: [REDACTED]
 SHEET NO. 1 OF 1